

# Class A Office Space For Lease

2415 Southern Blvd., Rio Rancho, NM 87124



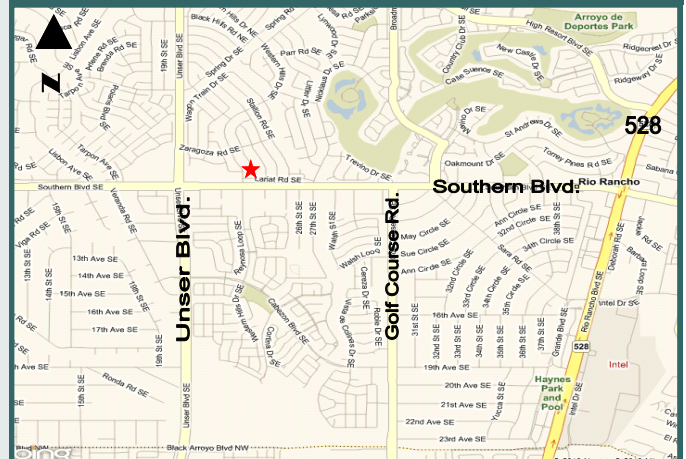
## Features:

Available: 3,900 SF total  
(Could be divided)

**Lease Rate: \$14.95 M.G.**

- 8-10 private offices
- 4 cubicles
- 4 conference rooms
- Great location on Southern between Golf Course and Unser
- 27,000 cars per day

## Map:



## Contact:

<b>Barbara Morgan</b>	<b>Clay Azar</b>
(505) 858.1444 Office	(505) 858.1444 Office
(505) 938.5982 Direct	(505) 938.5975 Direct
(505) 321.6839 Cell	(505) 480.9777 Cell
barbara@mcrnm.com	clay@mcrnm.com

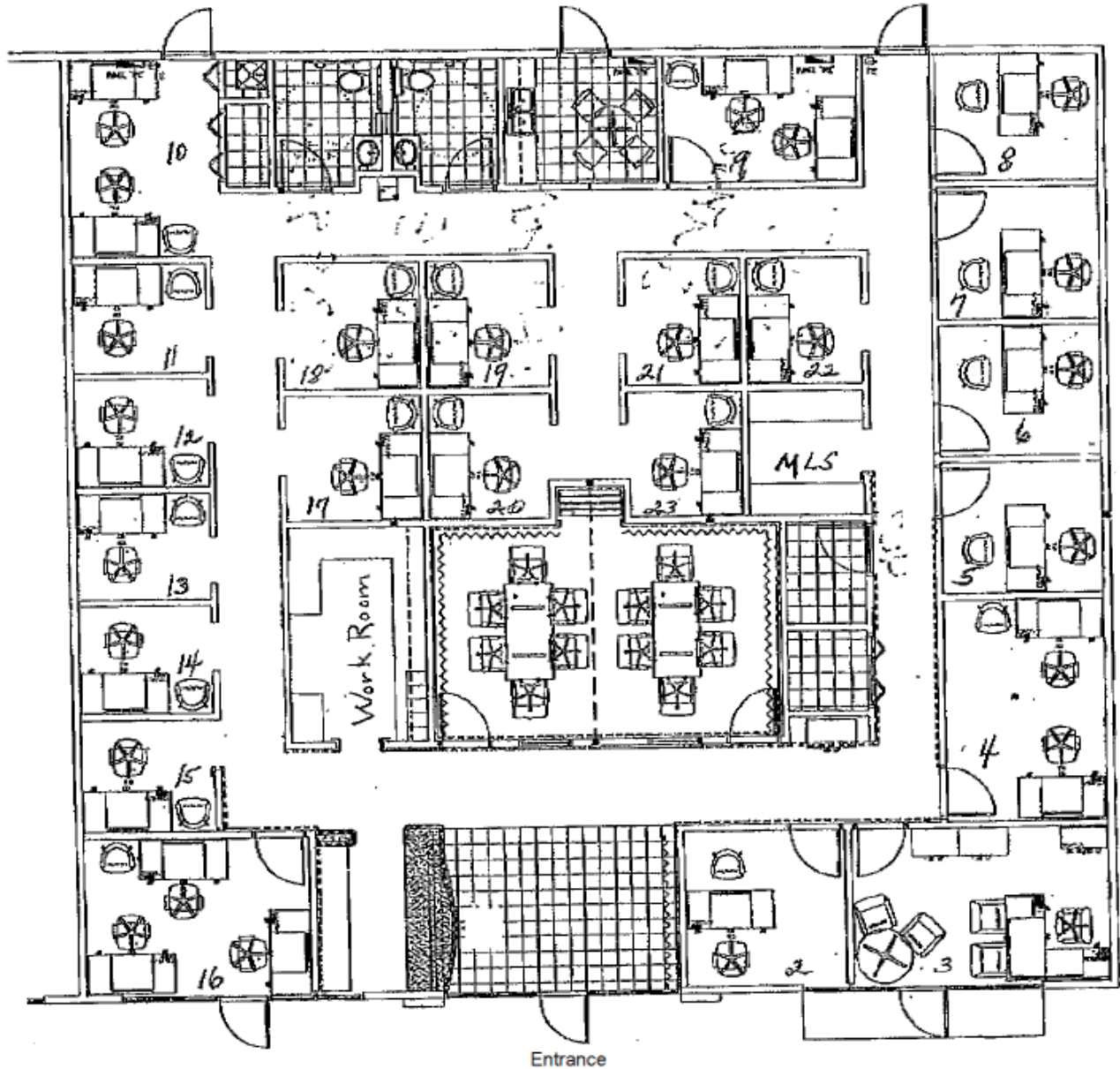
**Metro Commercial**  
REALTY . I N C .

8232 Louisiana Blvd. NE Suite C, Albuquerque, NM 87113  
505.858.1444 505.858.1448 fax www.mcrnm.com

The information herein has been obtained from sources believed to be reliable. While we do not doubt its accuracy, we have not verified it and make no guarantee, warranty or representation about it. It is your responsibility to independently confirm its accuracy and completeness. Any projections, opinions, assumptions or estimates used are for example only and do not represent the current or future performance of the property. The value of this transaction to you depends on tax and other factors which should be evaluated by your tax, financial, and legal advisors. You and your advisors should conduct a careful, independent investigation of the property to determine to your satisfaction the suitability of the property for your needs.

# Floor Plan

2415 Southern Blvd., Rio Rancho, NM 87124



**Metro Commercial**  
REALTY . INC .

8232 Louisiana Blvd. NE Suite C, Albuquerque, NM 87113  
505.858.1444 505.858.1448 fax www.mcrnm.com

The information herein has been obtained from sources believed to be reliable. While we do not doubt its accuracy, we have not verified it and make no guarantee, warranty or representation about it. It is your responsibility to independently confirm its accuracy and completeness. Any projections, opinions, assumptions or estimates used are for example only and do not represent the current or future performance of the property. The value of this transaction to you depends on tax and other factors which should be evaluated by your tax, financial, and legal advisors. You and your advisors should conduct a careful, independent investigation of the property to determine to your satisfaction the suitability of the property for your needs.